

Tudor Shift Layout

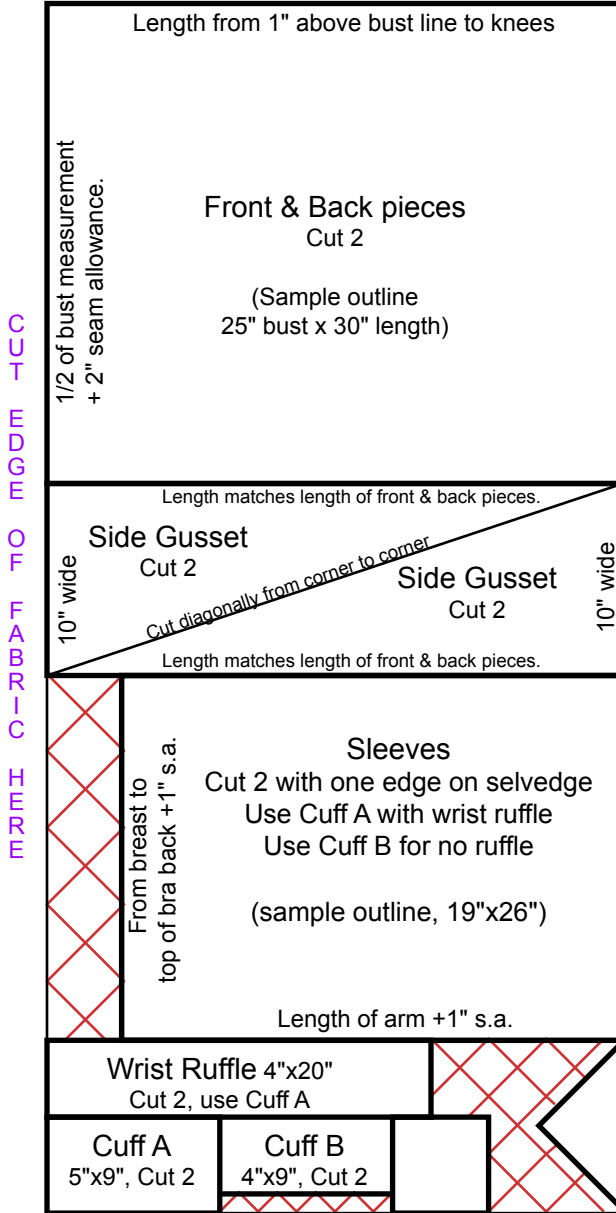
Light to medium weight linen 60" wide

2 yards maximum length needed for most people (including most plus sizes)

Wash & press linen and cut in half length-wise (cut along center fold).

Then place one side on top of the other, good sides inside, lining up selvedge edges.

The cut edge is to your left, selvedge edge to the right.



© 2005 Kimiko Small
<http://www.kimiko1.com>
 All Rights Reserved.
 Permission given for
 PERSONAL USE ONLY

With thanks to
 Rondinella Olsen
 and her classes at
 Costume College 2004

Cuff B (cut 2) can be cut with one edge placed on on folded fabric.

← Back Neck Gusset, Cut 2
 6"x6" right angle triangle with hypotenuse on selvedge edge. Adjust measurements to fit opening of back of shift. Can overlap at the back if needed.

Cuffs: adjust length to fit personal wrist measurements with overlap & 1" seam allowance

↑ Underarm Gusset 5"x5", Cut 2